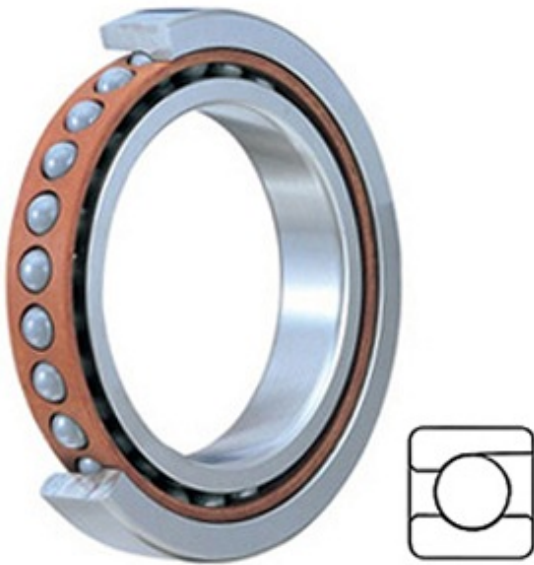




## SRS PRECISION AXLE CORP.



2MM9108WI Bearing 2D drawings and 3D CAD models

1.575 Inch | 40 Millimeter x 2.677 Inch | 68  
Millimeter x 0.591 Inch | 15 Millimeter Timken  
2MM9108WI Spindle & Precision Machine Tool  
Angular Contact Bearings

Bearing No. 2MM9108WI

Category	Precision Ball Bearings
Inventory	0.0
Manufacturer Name	TIMKEN
Minimum Buy Quantity	N/A
Weight	0.2
EAN	0087796072282
Product Group	B04270
Enclosure	Open
Precision Class	ABEC 7   ISO P4
Material - Ball	Steel
Number of Bearings	1 (Single)
Contact Angle	15 Degree
Preload	None
Raceway Style	1 Rib Outer Ring
Cage Material	Phenolic
Rolling Element	Ball Bearing
Flush Ground	No
Inch - Metric	Metric
Other Features	Single Row   Angular Contact   Super High Precision
Long Description	40MM Bore; 68MM Outside Diameter; 15MM Width; Open Enclosure; ABEC 7   ISO P4 Precision; Steel Ball Material; 1



## SRS PRECISION AXLE CORP.

	(Single) Bearings; 15 Degree Contact Angle; Phenolic Cage Material; 1 Rib Outer Ring Rac
Category	Precision Ball Bearings
UNSPSC	31171531
Harmonized Tariff Code	8482.10.50.28
Noun	Bearing
Keyword String	Angular Contact Ball
Manufacturer URL	<a href="http://www.timken.com">http://www.timken.com</a>
Manufacturer Item Number	2MM9108WI
Weight / LBS	0.44
D	2.677 Inch   68 Millimeter
d	1.575 Inch   40 Millimeter
B	0.591 Inch   15 Millimeter
d - Bore	40 mm
D - Outer Diameter	68.000 mm
Bearing Width	15 mm
do - Ball Diameter	7.937500 mm
C0 - Static Radial Rating	14900 N
Ce - Dynamic Radial Rating <sup>1</sup>	21900 N
Limiting Speed (Grease)	19900 rpm
Limiting Speed (Oil)	39800 rpm
Ball Type	STEEL
Cage Type	CR - Phenolic Outer Land Riding Cage
Bearing Weight	0.187 Kg
Design Units	METRIC
Full Timken Part Number	2MM9108WICR
R - Inner Ring To Clear Radius <sup>2</sup>	1.0 mm
r - Outer Ring To Clear Radius <sup>3</sup>	1.0 mm



## SRS PRECISION AXLE CORP.

da - Inner Ring Backing Diameter	45.700 mm
Da - Outer Ring Backing Diameter	62.200 mm